

# **WOULDHAM PARISH MAGAZINE**

**JUN/JUL 2025**



**PHOTO BY  
TEGAN FARROW**

# Local Contacts

## Wouldham Parish Council:

Tina Miles (Clerk): 8:30 AM - 1:30 PM  
Tel: 07904 281522  
Email: [clerk@wouldhampc.co.uk](mailto:clerk@wouldhampc.co.uk)  
Website: [www.WouldhamPC.com](http://www.WouldhamPC.com)  
Youth & Community:  
[YCworker@wouldhampc.co.uk](mailto:YCworker@wouldhampc.co.uk)

## Burham Parish Council:

Pam Saunders (Clerk): 10:00 AM - 2:00 PM  
Tel: 01634 685936  
Email: [pam@burhampc.co.uk](mailto:pam@burhampc.co.uk)  
Website:  
[www.burhampc.kentparishes.gov.uk](http://www.burhampc.kentparishes.gov.uk)

## Allotments

Wouldham: Ashley Crowdey  
(Chairperson)  
[wouldham.allotment@outlook.com](mailto:wouldham.allotment@outlook.com)

Burham: Dave Young 01634 867669



## Emergency & Support

Police Beat Officer: Georgia Marshall  
- Call 101 (non-emergency)  
or 999 (emergency)

NHS 111: For urgent medical help,  
call 111 or visit [111.nhs.uk](http://111.nhs.uk)



## Report It



Potholes:  
[www.kent.gov.uk/roads-and-travel/what-we-look-after/roads/potholes](http://www.kent.gov.uk/roads-and-travel/what-we-look-after/roads/potholes)

Water Leaks: [www.southeastwater.co.uk](http://www.southeastwater.co.uk)

Fly Tipping:  
[www.tbmc.gov.uk/bins-waste/report-fly-tipping](http://www.tbmc.gov.uk/bins-waste/report-fly-tipping)

Road Closures: <https://one.network>

## Stay Connected on Facebook

- Wouldham Parish Council
- Keep Wouldham Connected
- Wouldham Youth & Community Information
- Peters Village Connect



## Magazine Enquiries:



[editorwouldhamparishmagazine@gmail.com](mailto:editorwouldhamparishmagazine@gmail.com)



# Save The Date

## JUNE

- Monday 2nd Craft Club Wouldham Village Hall 10am-12pm
- Friday 6th Coffee Morning Wouldham Village Hall, 10am-12pm
- Sunday 8th June The Wouldham Big Lunch (see page 11)
- Tuesday 10th Library Bus (for details see page 20)
- Sunday 15th Little Pickers meet outside Co-op 10am-11am
- Monday 16th Craft Club Wouldham Village Hall 10am-12pm.
- Tuesday 17th Book club (for details see page 16)
- Friday 20th Coffee Morning Wouldham Village Hall, 10am-2pm
- Tuesday 24th Library Bus (for details see page 20)
- Friday 27th Coffee Morning Wouldham Church 10am-12pm
- Monday 30th Craft Club Wouldham Village Hall 10am-12pm
- **Fridays weekly**, Line Dancing (for details see page 16).

## JULY

- Friday 4th Coffee Morning Wouldham Village Hall, 10am-12pm
- Tuesday 8th Library Bus (for details see page 20)
- Monday 14th Craft Club Wouldham Village Hall 10am-12pm
- Tuesday 15th Book club (for details see page 16)
- Friday 18th Coffee morning Wouldham Village Hall 10am-12pm
- Sunday 20th Little Pickers meet outside Co-op 10am-11am
- Tuesday 22nd Library Bus (for details see page 20)
- Friday 25th Coffee Morning Wouldham Church 10am-12pm
- **Fridays weekly**, Line Dancing (for details see page 16).

# All Saints Church Wouldham Services and Activities

## June/July Services

Every Sunday 9.15am Morning Prayer

10.30am Holy Communion

## Special Services and Events

Pentecost 8th June.

## Coffee Morning

Last Friday of the month 10.45am -12pm.

All welcome. Please join us.

## Little Lights Toddler Church

9.15am on Fridays during term time

Usual working on Sundays, Tuesdays & Fridays Tel: 01624393936

| Position                                      | Persons                       | Contact details                            |
|---|-------------------------------|--|
| Church Wardens                                | Mrs Sue Jarvis<br>My Tim Reed | 07742 651986<br>07849 634901               |
| Baptisms & Church secretary                   | Mrs Gwen Worcester            | 01634 672060<br>gwenworchester@hotmail.com |
| Organist & Chairmaster                        | Douglas Henn-Macrac           | 01634683096<br>douglas@gundulf.org.uk      |
| Monuments & Churchyard, and wedding enquiries | Rev Nicky Rawlins             | 07964697556                                |
| Safeguarding officer                          | Mrs Helen Wells               | 01634 685935<br>hwells2@btinternet.com     |
| Bell ringing                                  | Rev Nicky Rawlins             | 07964697556                                |
| Church Treasurer                              | Mrs Nicky Grimes              | 01634 864319                               |

# News from All Saints, Wouldham ..... and hello from the New Vicar.

I have now been in the parish for about six months and I am just about finding my feet. It has been an exciting time as I have been trying to get to know the parish and the different people. I have been visiting the schools and trying to get know different organisations within the parish. Hopefully, I will be able to see more of you in the coming months.

Spring is here and the countryside is blooming and so is the churchyard. If you have walked past or visited in the last week or so, you will see that it is full of blossom, flower and wildlife. Recently, churchyards have been identified as significant areas for plant and wildlife diversity and we certainly see some of that in our churchyard. However, we try not to let it run wild, and it is regularly maintained. We are seeking to manage the balance between allowing nature some scope and maintaining a graveyard which is regularly visited by many people in the community. The parish community of All Saints has been part of a new venture, joining with the Methodist Community. On the third Sunday of every month (except for May when it will be the fourth) we have joined together to celebrate a service of Café Church. This is a very informal service and takes place at the Burham Old School Community Centre at 3pm. We gather together to eat cake (lots of cake), sing, pray and generally explore what it means to be part of God's world. Everybody is very welcome and if you feel this is something which you feel you might be interested about, please join us. You will be very welcome. Meanwhile the community continues to meet on Sunday mornings for our regular services and everybody is welcome to join us.

I wish you all God's blessing

Rev Nicky Rawlins, Priest in Charge

PHOTO BY JANE MILES



## CREAM TEAS



All Saints Church  
Wouldham  
2.00pm – 4.30pm  
Every first Sunday  
of the month from  
June until September

# The Cat Lady

## CAT MINDING SERVICES

- ◆ Based in Peter's Village  
- covering all local villages.
- ◆ Flexible, reliable and tailored to your  
cat's needs & routine.
- ◆ DBS Certificate & insured.

📞 07597 339920

📧 adbcats4@gmail.com





**Rainbows**  
Wouldham  
For ages 4 to 7



**Brownies**  
Wouldham  
For ages 7 to 10



**Guides**  
Wouldham  
For ages 10 to 14

## Join us today!



### The adventure starts here

Make new friends, build your confidence and inspire our young members in Wouldham.

Register your interest to volunteer in Girlguiding  
<http://www.girlguiding.org.uk/get-involved/become-a-volunteer>

More information  [wouldhamgirlguiding@gmail.com](mailto:wouldhamgirlguiding@gmail.com)



Amber Healing Counselling

Safe

Authentic

Flexible

## Your Mental Health Counsellor

Counselling for Personal Growth and Healing

- Individual Counselling
- Anxiety and OCD Management
- Depression Support
- Work Stress Support
- Co-dependency
- Sound Meditation

To contact visit my website  
[www.amberhealingcounselling.co.uk](http://www.amberhealingcounselling.co.uk)  
 or email:  
[amberhealingcounselling@gmail.com](mailto:amberhealingcounselling@gmail.com)





**bacp**  
Registered Member 409715  
MBACP

Member of British Association of  
Counselling and Psychotherapy



## Wouldham Walk

Tonbridge & Malling health walks are free, fun and friendly - perfect to help you get active, meet new people and improve mental health and well being.



**Where:** Knowle Road car park, ME1 3XB

**When:** Every Wednesday

**Walk starts:** 10.30am from the car park

**Walk lasts:** 60-90 minutes

**No need to book, just turn up!**

Walks are subject to change so please check our website

Join us for refreshments afterwards.



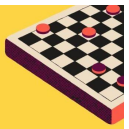
**ONE YOU KENT**



Visit: [tmbc.gov.uk/community/health-one/3](http://tmbc.gov.uk/community/health-one/3)

Email: [healthy.living@tmbc.gov.uk](mailto:healthy.living@tmbc.gov.uk)

**Ages  
8 - 17**



## Wouldham Youth Club

**TUESDAYS**

**Wouldham Village Hall**

**Yr7-17yrs 5.30-7.15pm**

**THURSDAYS**

**Wouldham All Saints School Hall**

**8yrs-Yr6 6.00-7.15pm**

**£5 MEMBERSHIP FEE**

**£1 PER SESSION**

**Sports, arts and crafts,  
games, movies, table  
tennis, table football and  
many more fun activities!**

For more info please visit:  
[www.facebook.com/WYandCI](http://www.facebook.com/WYandCI)



**ROCHESTER St.Justus Church The  
Fairway ME1 2LT Wednesday's at 9am  
SNODLAND Wednesday's at 5.30pm,  
Thursday's at 7.30am & 9.30am. Ham  
Hill Working Men's Club 259-261  
Malling Road, ME6 5JR**

**Genette 07880572131**

[slimmingworld.co.uk](http://slimmingworld.co.uk)



Winchester House Care Home  
180 Wouldham Road, Rochester, ME1 3TR  
Tel: 01634 685001 • [www.barchester.com](http://www.barchester.com)

Nursing Care • Dementia Care • Respite Breaks





# WOULDHAM PARISH COUNCIL



**JUNE/JULY, 2025**

**Keep up to date by visiting: [www.wouldhampc.com](http://www.wouldhampc.com) or via Facebook**

Our last meeting was on the 3rd June, 2025. Minutes etc will be on our website on approval. The Annual Parish Meeting was held on 6th May and reports from groups and organisations are on the website. The next meeting will be on Tuesday the 1st July, 2025 in the Village Hall, starting at 7:30pm. Agenda and details can be found on the website 3 days before the meeting.

## **COMMUNITY MINIBUS**

We are currently reviewing the use of this service. Due to the lack of usage, we are going to reduce the Shopper service to twice a month, with trips and hirings being available for all other days. However, this will only work if we have more volunteers. Anyone volunteering will get free entrance and free training arranged by Compaid.

## **SECTION 106 FUNDED ADULT EDUCATION COURSES**

Continuing Regular Courses/sessions

CHAIR EXERCISE – to increase balance, strength, and mobility – FREE

Alternate Mondays (2nd & 4th), 10-12PM in the Village Hall

CRAFT & CHATTER: – Informal group to do your own projects or join in a community project – FREE

Alternate Mondays (1st & 3rd), 10-12PM in the Village Hall

LINE DANCING – Fridays, 5-6PM in the Village Hall £7/session

## **UPCOMING COURSES**

Wednesday 4th June - Building Confidence and Self Esteem 10-2pm.

For further information or to sign up to any of these courses, please contact: [clerk@wouldhampc.co.uk](mailto:clerk@wouldhampc.co.uk)

## **SPEEDWATCH**

The Speedwatch continue to monitor speeds and welcome its new members. Due to the amount of speeding around the Parish, the Police mobile units are still regularly around.

**SO, WATCH YOUR SPEED!**

If you would like to join this group please register on:

<https://communityspeedwatch.org/FRONT-v2-Register.php>



**PHOTO BY LOUISE MARTIN**





# WOULDHAM PARISH COUNCIL



## **ROADS/FOOTPATHS/GROUNDS MAINTENANCE**

As a reminder, potholes etc can be reported directly to KCC through their website: <https://www.kent.gov.uk/roads-and-travel/what-we-lookafter/roads/potholes>

Water leaks can also be reported to: [www.southeastwater.co.uk](http://www.southeastwater.co.uk)

## **FINANCIAL SUPPORT**

If you are struggling with debt or need advice on benefits please contact:  
Citizens Advice in North & West Kent - Tonbridge & Malling on 0808 2787810  
Or visit: <https://www.citizensadvicenwk.org.uk>

## **CITIZENS ADVICE BUREAU (CAB) - SNODLAND OUTREACH**

Citizens Advice runs a drop-in session in Snodland on Monday mornings from 10am – 12.30pm to offer general advice.

They are working from: Snodland Town Council Offices, Waghorn Road Snodland. ME6 5BQ:

You can drop in to our office to speak to someone. But if you would like to pre-book an appointment, contact 0808 2787810 s to see if this is an option.

## **DEFIBRILLATORS**

The Parish Council have paid for 3 defibrillators in the village.

They are located at: THE VILLAGE HALL, 15 High Street, THE COMMUNITY CENTRE, Tolhurst Close, Peters Village and outside 165 HIGH STREET.



PHOTO BY ALISON CURRIN

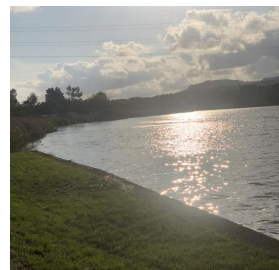


PHOTO BY GILL STREETER



# WOULDHAM PARISH COUNCIL



## **LIFEBUOYS**

As we all live near a very fast-moving river, the Parish Council have paid for Lifebuoys along the river in Peters Village. It is vital that these are always fit for purpose. They are checked monthly by Councillors and should only be opened in case of emergency.

## **PUBLIC OPEN SPACES**

DOG POO! Parks, footpaths, other people's gardens - we really need ALL DOG OWNERS to do their bit. Please be extra vigilant when you take your dogs out at night, it might be you that step in it! It is still particularly bad on the High Street to, and around, the Medway Pub.

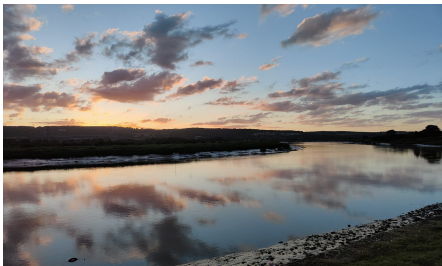
## **NEIGHBOURHOOD WATCH**

Neighbourhood Watch schemes are now running in both parts of the Parish, Peters Village and Old Wouldham. Please visit:

<https://www.ourwatch.org.uk/> to sign up to either scheme where you can receive support to report crimes and make the area safer.

If you would like to become a volunteer driver, or have any suggestions for learning courses, please get in touch with me.

Clerk Tina Miles [clerk@wouldhampc.co.uk](mailto:clerk@wouldhampc.co.uk) Tele: 07904281522



**PHOTO BY GENETTE HAWKINS**



**PHOTO BY ANA FILIPA  
GONCALVES**



## Dispensary (Burham) Opening Times

| Day       | Morning          | Afternoon       |
|-----------|------------------|-----------------|
| Monday    | 8.45am - 12.00pm | 2.00pm - 4.45pm |
| Tuesday   | 8.45am - 12.00pm | 2.00pm - 6.15pm |
| Wednesday | 8.45am - 12.00pm | 2.00pm - 6.15pm |
| Thursday  | 8.45am - 12.00pm | 2.00pm - 4.45pm |
| Friday    | 8.45am - 12.00pm | 2.00pm - 6.15pm |
| Weekend   | CLOSED           | CLOSED          |

**WOULDHAM YOUTH CLUB  
INVITE YOU TO**

# **THE WOULDHAM BIG LUNCH 2025**

**SUNDAY JUNE 8TH 12-4PM  
ON THE VILLAGE REC**



**BRING A PICNIC. JOIN THE FUN,  
BRINGING THE COMMUNITY TOGETHER**

**The Big Lunch: Tunes from DJ Scooby,  
Games & Sports Equipment (Provided by  
Wouldham Youth Club)  
& Community Fun!**





# Wouldham Celebrates VE Day in Style!

Our village came together in fantastic fashion to commemorate the 80th anniversary of VE Day with a memorable Hanger Dinner Dance on the 9th May. A wonderful turnout of 100 local residents, eager to mark this significant historical milestone, filled the venue with celebratory spirit.

The atmosphere was electric as people took to the dance floor, enjoying a nostalgic evening of music and camaraderie, made even more special by the fantastic sounds of the Swingtime Sweethearts. Their wonderful performance truly captured the era and had everyone singing along. Adding to the festive spirit was the delicious hog roast provided by The Hogroast Catering Company, Cuxton, who served up an amazing feast that was thoroughly enjoyed by everyone.

Adding a touch of historical charm, a vintage jeep was proudly on display, offering a glimpse into the vehicles of the era. Guests were also treated to a sneak preview of the beautiful Wouldham community quilt hanging, the stunning community art project created by the Craft and Chatter group, which will soon take its place of honour in the Village Hall.

From the lively dancing to the delicious food and the fascinating glimpses into the past and present of Wouldham, the VE Day Hanger Dinner Dance was a resounding success. A fun night was had by all, providing a wonderful opportunity for our community to come together, remember the sacrifices made 80 years ago, and celebrate the peace we enjoy today. A big thank you to everyone who came along and made it such a special occasion, with particular thanks to the Gores, and of course, Parish Clerk Tina Miles and her dedicated team of organisers for all their hard work in putting on such a fantastic event. Also a huge thanks to those who purchased raffle tickets, a huge £435 was raised for RBLI.





**INTERESTED IN TAKING ON AN ALLOTMENT?**

**PLEASE CONTACT**

wouldham.allotment@outlook.com

Half plots available at £29 for the year for

Wouldham residences. Addition £10 charge for out of area.

*Grow your own fruit and vegetables!*



**Guided group walks – 2025**



Our friendly group is one of 13 Ramblers groups in Kent and part of the national Ramblers walking organisation.

We explore the beautiful countryside of Tonbridge and Malling and surrounding areas.

You don't have to be a Ramblers member to try a couple of walks with us, to help you decide if you'd like to join. If you're new to our walks, it's a good idea to contact the walk leader beforehand to check that their walk will suit you.

For details of all our mid-week and Sunday walks, and walk leader contacts,

see [www.tonbridgeandmallingeramblers.org.uk](http://www.tonbridgeandmallingeramblers.org.uk).



# Wouldham & Burham Community Mini Coach Trips

Please ring the number on your membership letter to book trips.

If you are not already a member, but are interested in one of these trips please contact [wpcvolunteer3@gmail.com](mailto:wpcvolunteer3@gmail.com) for further information.

Please ring for Monday's trips by Thursday the week before.

For Monday's trips by Thursday the week before.

**We are currently reviewing the use of this service. Due to the lack of usage, we are going to reduce the Shopper service to twice a month, with trips and hirings being available for all other days. However, this will only work if we have more volunteers. Anyone volunteering will get free entrance and free training arranged by Compaid.**



# WOULDHAM & BURHAM COMMUNITY GROUPS & CLUBS

## **Coffee Mornings**

Wouldham Village Hall, every 1st & 3rd Friday of the month 10:00-12:00pm  
Wouldham All Saints Church, last Friday of the month 10:45-12:00. Please come along for a cup of coffee/tea, lovely cake, and a natter.

**Bell Ringing** All Saints Church, Wouldham 8pm Wednesdays. New ringers welcome. Please do get in touch if you are interested. Contact Rev Nicky Rawlins 07964697556.

**Church Choir** All Saints Church, Wouldham. Choir practices are normally held in the church at 7:30pm on Thursdays. There are vacancies for over 18s in all voice parts. For more information please contact Douglas Henn-Macrae Email: [douglas@gundulf.org.uk](mailto:douglas@gundulf.org.uk) 01634 683096.

**Craft & Chatter Club** Mondays fortnightly 10-12pm Wouldham Village Hall. Free, all welcome, see page 18.

**Over 60's Club** Every Tuesday at The Watermans Pub from 2pm-4pm. Welcome all over 60. We have a weekly quiz (brain training). Subs £2.50 per week plus £1 for 2 games of Bingo (cash prizes) and 50p for raffle. Free cakes and savouries, tea and coffee.

**Burham & Wouldham WI** Every third Tuesday in the month with a variety of speakers on different topics. We are a small friendly group and welcome new members, if you are interested come along at 7.30pm and keep an eye on Facebook for details of the next meeting. You will be warmly welcomed, give us a try before joining.

## **Girlguiding Rainbows (age 4 to 7) Brownies (age 7 to 10) Guides (age 10 to 14)**

Spaces available. If interested please register at [Girlguiding.org.uk](http://Girlguiding.org.uk) Or if you would be interested in volunteering then please contact Ashley Crowdey, 07852485291 Email: [wouldhamgirlguiding@gmail.com](mailto:wouldhamgirlguiding@gmail.com)

**Jelly Tots Parent and Baby Group** age 0-5 years, Tuesdays 9:30am-11am (term time only) held at Wouldham Village Hall. Refreshments supplied. We are a friendly group so why not pop along and join us?

**Youth Club** 8yrs - 17yrs, Tues & Thurs, see page 6 for details. Members Only.

**Line Dancing** Every Friday at Wouldham Village Hall, 5-6pm. Beginning and intermediate dancers are welcome to join our adult fun classes. Pop in anytime and get a dose of positive vibes with us!

**Wouldham Book Club** If you would like to join please contact Sarah on 07766074527 and you can be added to our WhatsApp chat. We meet in Wouldham Village Hall on the 3rd Tuesday of the month at 7:30pm. New members are always welcome.

**Speedwatch** Interested in joining Kent Community Speedwatch? Register here: [www.communityspeedwatch.org](http://www.communityspeedwatch.org). Always looking for new members to join our team.

**Mammoths Touch Rugby Group** Come and try Touch rugby for free every Sunday 10am in Wouldham Rec. All abilities welcome and we welcome all new members.

**Free Courses** Check out the free courses on page 7.  
Contact [clerk@wouldhampc.co.uk](mailto:clerk@wouldhampc.co.uk) to book a course.

*Join us*



A new Community Bridge website has been launched to help residents be able to find new local groups & activities to attend.

Please visit [www.communitybridge.co.uk](http://www.communitybridge.co.uk)

The new website lists almost 200 local groups and organisations, which can be searched by village or activity. For example, select "Wouldham" from the drop-down list and you will be able to see every group and activity in Wouldham.

If you run a group or activity and would like to be listed (free of charge) there is a button to submit your details which will be added at the next monthly update.



## **BURHAM AND WOULDHAM WI**

**Tuesday 17th June - Ever wondered how Reflexology works? Our speaker in June, Jackie Gillard, will explain all!**

**Tuesday 15th July - In July we have our birthday party and Dean Caston will be talking about Monologues and Myths.**

**The WI provides women of all ages with fun and friendship, a chance to learn new skills, get involved within the community and take part in activities. Why not come along and meet us. Meetings start at 7.30pm in Burham Village Hall. We'll**

**have a raffle and time to chat over tea.**

**Contact us on: [BurhamWouldham@wkwfi.org.uk](mailto:BurhamWouldham@wkwfi.org.uk) or 01622 718665**

The WI in UK is celebrating its 110th anniversary this year. What an amazing legacy of togetherness and fun! Looking back to 1915 we can see how very different things are for all of us but the core values of supporting women through widening interests, making new friends and working together as part of the community remain constant.

We have speakers throughout the year and enjoy hearing about a whole range of things from the common place to the weird and wonderful - and there is always a chance to chat over a cup of tea and a biscuit or two. But it's not just talking! To work off the calories we have walking netball and a watersports day in the calendar as well as our locally based monthly walk. At each meeting there is a raffle and a competition to raise funds for charity supporting women led businesses in the third world. This year's campaign is about encouraging people to learn about first aid and we will be planning activities around that as well as supporting the WI Week of River Action in September. Apart from that there are regular coffee mornings, visits to Winchester House, whist days, outings to places of interest and we have a team at the quiz nights at The Windmill. There are events with other WIs and classes across West Kent and an online learning portal. And, if you are into knitting, we are starting work on refreshing the poppy display for Remembrance Day. There is just so much going on and always something to join in to suit your interests. We meet on the third Tuesday evening the month at Burham Village Hall. Why not forget the weeding and household chores and come along and see what we are about, get in touch or turn up at a meeting – we would be pleased to see you. Margaret Wood – 01622 718665 or [BurhamWouldham@wkwfi.org.uk](mailto:BurhamWouldham@wkwfi.org.uk).

# A STITCH IN TIME: WOULDHAM'S COMMUNITY QUILT

Since September 2024, the talented ladies of the Wouldham Craft and Chatter group, with expert guidance from Paula from Kent Adult education, have been diligently working on a very special project: a community quilt hanging destined for pride of place in our Village Hall. This collaborative endeavor is a testament to the diverse skills and shared community spirit within the group.

From the delicate art of crochet to vibrant painting, intricate stitching, and elegant embroidery, every inch of the quilt tells a story. We also have some beautiful painted pieces created by Wouldham Girlguiding members. Members have poured their creativity and passion into depicting scenes and memories of Wouldham, both past and present. You'll find familiar landmarks, glimpses of bygone eras, and perhaps even personal connections woven into the fabric of this unique piece of art.

The creation of this quilt has been more than just a crafting project; it has fostered camaraderie, shared skills, and provided a tangible way for the Craft and Chatter group to contribute to our village. The dedication and artistry displayed in each element are truly remarkable, and the finished hanging promises to be a beautiful and meaningful addition to the Village Hall for all to enjoy.

Pop along to Wouldham Craft & Chatter Club, alternate Mondays 10am-12pm  
Wouldham Village Hall. Free to attend. Refreshments served.



Wouldham  
Craft &  
Chatter Club

ALTERNATE MONDAYS 10AM-12PM  
WOULDHAM VILLAGE HALL

FROM BEGINNERS TO EXPERTS, EVERYONE IS  
WELCOME, JUST BRING ALONG YOUR KNITTING,  
CROCHET OR LATEST CRAFT PROJECT.  
NO NEED TO BOOK. FREE TO ATTEND.

COME AND MEET NEW PEOPLE, TAKE TIME OUT TO  
RELAX AND ENJOY A CHAT, LEARN NEW HINTS AND  
TIPS, GET STARTED ON THAT NEW HOBBY OR GET  
INVOLVED WITH ONE OF OUR COMMUNITY PROJECTS.

See you there!

SUMMER 2025 DATES:  
APR 7TH & 21ST  
MAY 5TH & 19TH  
JUN 2ND 16TH & 30TH  
JUL 14TH

The poster features a blue background with a large red ball of yarn in the top right corner. At the bottom, there are illustrations of various craft supplies like knitting needles, scissors, and spools of thread. A small crest is visible in the bottom right corner.





## Supporting Wouldham and Peters Village Community

Since 2021 I have arranged for the following grants to support Wouldham and Peters Village community:

£500 towards the **new defibrillator** at Peters Village

£600 for Sue Cave's '**Animals Lost and Found in Kent**'

£600 over two years for **Wouldham Brownies and Guides** for new parade flags and equipment

£500 to help re-establish the **Wouldham Youth Club**

£500 to celebrate **Queen Elizabeth's Platinum Jubilee** and to give every child a commemorative mug

£711 for **litter picking supplies**

£400 to give every child at Wouldham All Saints Primary School a **packet of sunflower seeds** to grow over summer

£300 for **Christmas Hampers** for Wouldham's military veterans and residents struggling to make ends-meet

£55,000 to finance the new **Wouldham and Burham Community Minibus**

£1,400 over four years to cover the cost of the annual **Christmas Lunch for Wouldham Over 60s Club**

## THANK YOU

I am very honoured to be re-elected as your Kent County Councillor at the election on Thursday 1 May.

I am even more honoured that the Wouldham ballot box was the best result for me, with support from 58% of residents who turned out to vote.

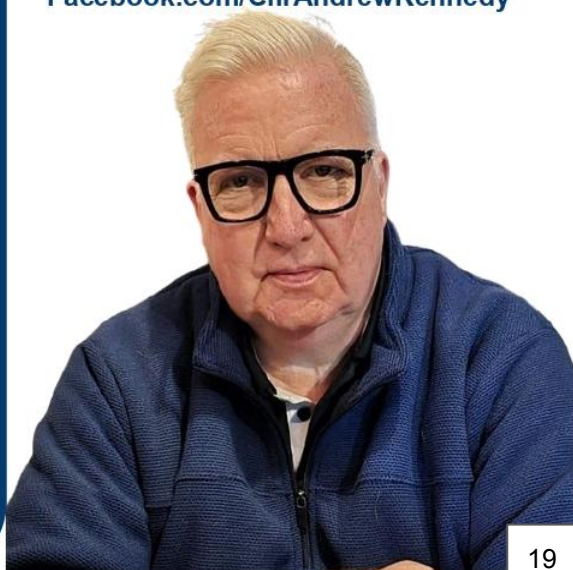
Four years ago I promised the people of Wouldham that I would not let you down. While we have not solved every issue, and there are things still to do, I think the majority of people are generous enough to acknowledge that I have done by best.

I look forward to working with you again over the next four years.

If I can help, please get in touch:  
[andrew.kennedy@kent.gov.uk](mailto:andrew.kennedy@kent.gov.uk)

Sign-up for my newsletter at:  
[tinyurl.com/AKMonthlyNews](https://tinyurl.com/AKMonthlyNews)

Follow my work on Facebook:  
[Facebook.com/CllrAndrewKennedy](https://Facebook.com/CllrAndrewKennedy)





# SUMMER WORD SEARCH

Ice cream  
Sunny  
Swimsuit  
Sunglasses  
Flipflops  
Explore  
Family  
Tent  
Memories  
Hat  
Beach  
Campsite  
Camera  
Heatwave  
Picnic  
Sunscreen

|   |   |   |   |   |   |   |   |   |   |   |   |   |   |   |   |   |   |
|---|---|---|---|---|---|---|---|---|---|---|---|---|---|---|---|---|---|
| S | J | B | S | P | E | S | I | Y | G | I | R | R | N | X | T | X | E |
| U | F | H | F | W | P | M | U | S | I | M | T | I | H | H | C | Z | U |
| N | C | A | E | L | I | I | E | N | U | C | N | M | K | I | B | C | H |
| G | A | E | M | A | I | M | C | M | S | N | E | N | E | L | E | M | N |
| L | M | B | X | I | T | P | S | N | O | C | N | C | D | Z | A | X | D |
| A | P | T | H | P | L | W | F | U | I | R | R | Y | R | C | C | E | H |
| S | S | N | E | A | L | Y | A | L | I | C | I | E | Y | E | H | E | C |
| S | I | I | X | N | T | O | G | V | O | T | T | E | E | K | A | D | T |
| E | T | P | M | F | T | C | R | O | E | P | H | I | S | N | R | M | X |
| S | E | V | W | A | W | Y | D | E | Z | V | S | T | C | G | N | G | A |
| V | T | N | O | C | W | M | Q | A | I | J | I | Z | O | T | F | O | C |
| L | G | C | F | C | A | M | E | R | A | S | K | H | G | S | N | L | A |



**Kent Libraries**

## MOBILE LIBRARY DATES & LOCATIONS

**10 June 2025    24 June 2025**

**8 July 2025    22 July 2025**

### **Wouldham**

Walter Burke Avenue, ME1 3YJ 1:05pm - 1:35pm

Ravens Knowle, Knowle Road, ME1 3XS 1:45pm - 2:15pm

### **Burham**

Burham Village Hall, Rochester Road, ME1 3SH 2:25pm - 3:25pm

### **For more information:-**

<https://www.kent.gov.uk/leisure-and-community/libraries/visiting-a-library/mobile-libraries>

# WOULDHAM RECOLLECTIONS



**Village Elder**  
**Madeline (Madge)**  
**Sarah Pearson**  
born 24th July 1935  
- 21st March 2025



Madeline was born in Castle Street to Sarah and Henry Norris, later moving to Hazel Cottages where she lived with her mum and dad along with Sarah Norris, her sister, and her 4 brothers, Henry, Reg, Jess, and Bernard. Madeline had a happy childhood, then, when WW2 broke out in September, 1939, Madeline's 3 older brothers aged 17, 18 and 19 years went off to war, lucky they all returned home again.

Madeline got her name granny as she was always knitting socks for the soldiers. While her mother played, Madeline would pump the old organ that stood in Wouldham church for the Sunday services. Madeline learnt to read music and play the piano, her faith played a big part in her entire life. She passed the entrance exam to go to the girl's grammar school, but her mum could not afford the school uniform, so Madeline couldn't go, Madeline would go hop picking with her mum and sister to Chartham Hatch and spoke of lovely times picking the hop. Later, Madeline worked in the Medway Inn, also go dancing in the Village Hall, this is where Madeline met the love of her life Bill Pearson, known to many as Yorkie, as he was a Yorkshire man. Bill, would play honky tonk piano and mouth organ in the village pubs, later they married and went on to have four children, the 3 girls were brought up under a strong Christian faith church of England, all Madeleines children were christened in Wouldham church and took holy communion there. Madeline would often talk about the war and how her and her brothers, her sister and mum would have to take themselves up to the tunnel that was in the chalkpit of Wouldham by the tram path.

Madeline adored her Wouldham village, also the pretty Wouldham church. Madeline had opportunities to leave the village, but no way would she leave her beloved Wouldham.

## Wouldham Football Club 1960 – 1961 (part 1)

The early 1960s were a boom period for football in the Maidstone area. The Maidstone & District Football League had been expanding steadily in the years following World War Two, and by the 1960-61 season, consisted of seven divisions. Wouldham Football Club had finished second in the Premier Division in 1960 (missing the league title by just two points behind champions Snodland FC) and hopes must have been high in the village that 1961 would see a return of the Premier Division trophy to Wouldham, as the club had won the Maidstone League twice in the years following the war, in seasons 1955-56 and 1958-59.

Competing against Wouldham for the league title in 1960-61 were 11 other teams: Snodland, Barming United, Coombe Estate, Eccles, Hadlow, Len Social, Maidstone 'A', Marden British Legion, Reed Medway Sacks, Staplehurst, and Tovil & Bridge Mill. The season started exceptionally well for Wouldham, as on Saturday 16 September 1960 they began the league campaign with an impressive 8-1 away win against Tovil & Bridge Mill. Unlike today's football leagues that award three points for a win, in the early 1960s the Maidstone League only awarded two points for wins, and even more unusual to modern eyes is that goal average (goals scored divided by goals conceded) was used by the league instead of goal difference.

Wouldham's next game saw them pick up another two points with a 4-3 win against Staplehurst (17 September), but the club's third league match on Saturday 1 October saw a home defeat at the Rec to Hadlow with a score of 5-4 to the visitors.

Wouldham were to bounce back from this loss, and won their next league match 5-2 against Barming United (8 October). Wouldham's three wins and one defeat meant that by mid-October they were fourth in the division with 6 points. Maidstone 'A' were in first place with 11 points.

Wouldham's next match would be the visit of defending champions Snodland on Saturday 22 October, and their remaining fixtures for 1960 would be:

5 November 1960 Sevenoaks United (away) Kent Junior Cup 'A' Round 1

19 November 1960 Maidstone 'A' (away) Premier Division Maidstone League

26 November 1960 Barming United (home) Challenge Cup (Maidstone League)

31 December 1960 Medway Sacks (away) Premier Division Maidstone League

By Neil Miners



# **WOULDHAM HISTORY**

## **Wouldham Hall - Peters Village**

The most recent Wouldham Hall was built in the eighteenth century. A local legend is that Nelson was rowed to the house from Chatham to visit Lady Hamilton here.

The house (or previous buildings of) had existed on this piece of land ever since John of Woldeham was granted the land when King John reigned. It was also known as "Sellars" when the knight John Atte Cellar lived there and also Beuley Court from when the Beuley family lived there. The manor was passed from the Beuleys in 1693 to Thomas Manley of Chester and then later in 1779 to the Brookes. It is thought that the Brookes may have built the most recent house, as pictured.

In the nineteenth century, the house became the residence of the Peters family, who ran the nearby Peters/Wouldham cement works.

The dilapidated building was eventually taken down in the 1950's to make way for the new pylons. It was located between Keepers Cottage Lane and the old cottages and you can still see some of the pantry floor tiles in the ground if you look carefully.



# KEEPING YOUR SHED/GARAGE SAFE & SECURE

The top five most common items stolen from sheds

- Bikes
- Mowers
- Sports equipment
- Power tools
- Garden tools



Many people don't secure their shed or garage in the same way they do their homes - often using an easy-to-break lock or padlock to protect valuable contents such as a car, bike or lawnmower.

Take a look at your shed and consider how you would break in. It's worth having a good padlock on the door with no exposed screws. Pay attention to hinges, as these are sometimes easily removable. If you have windows then these could be vulnerable unless they're secured with wire mesh or grills.

Alarm it

Consider a battery-operated shed alarm. They look low key but they respond to movement or door contact with an extremely loud siren.

Lock it, hide it or mark it

Don't give them the opportunity or the tools to commit a crime. Lock everything away securely. Tools can be locked inside a locker or box or secured with a chain. Secure your bike to the ground or a lockable stand within a locked shed or garage. It's always worth draping an old sheet or blanket over the top of mowers or bikes to keep them covered from view. Property mark your items and take photographs of them. Some tools can be painted with your name or postcode.

Although it might sound like stating the obvious, never leave your garage or shed door unlocked if you're not around. Keep the door closed between uses so that no one can see what's inside.



## Eating and Drinking

**The Watermans Arms,  
Wouldham.**

**Tel. 01634 681830  
Pub/Restaurant.**

**The Butchers Block, Burham**

**Tel. 01634 786626  
Pub/Restaurant**

**The Robin Hood, Burham**

**Tel. 01634 861500  
Pub/Restaurant**

**The Windmill Inn, Burham**

**Tel. 01634 864570  
Pub/Restaurant.**

**Happy House Chinese, Burham**

**Tel. 01634 668326 Takeaway**

**The Medway Inn & Ruby's  
Indian, Wouldham Tel 01634  
869181**

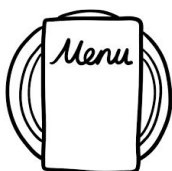
**Pub/Restaurant/Takeaway**

**Fireaway Pizza, Peters Village**

**Tel. 01634 900200 Takeaway**

**Good Cod Fish & Chip Van**

**Tel. 07840181091 Wednesday  
Burham Village Hall, Saturday  
Wouldham Rec. Takeaway**



## Defibrillators

Our defibrillators are at;



- Burham Parish Office
- Wouldham Village Hall, 15-17 High Street
- 165 High Street, Wouldham
- Community Centre, Tolhurst Road, Peters Village.

If a machine is needed call 999 for the code and instructions.

## Prescriptions

Prescriptions can be arranged to be collected, thanks to a service offered by the church. The surgery requires 4 days notice to prepare them and 24 hours notice is required for volunteers to collect them. Contact Rachel Harris (who will be available to deliver medicines on Tuesdays and Thursdays) on 07725 289194 for more details.

## Dog Warden



If you need to report an incident, dog fouling or misbehaviour, please report to:

**Tonbridge And Malling Dog  
Warden on 0845 241 7253.**





# HALL HIRE



## Wouldham Village Hall

Available for:

- Private functions / parties
- Regular bookings (for groups to meet or small businesses to hold classes)
- Meetings or training sessions

Costs: £13 per hour for private bookings.

Business bookings, contact for rates.

A damage deposit of £50 is required when booking the hall.

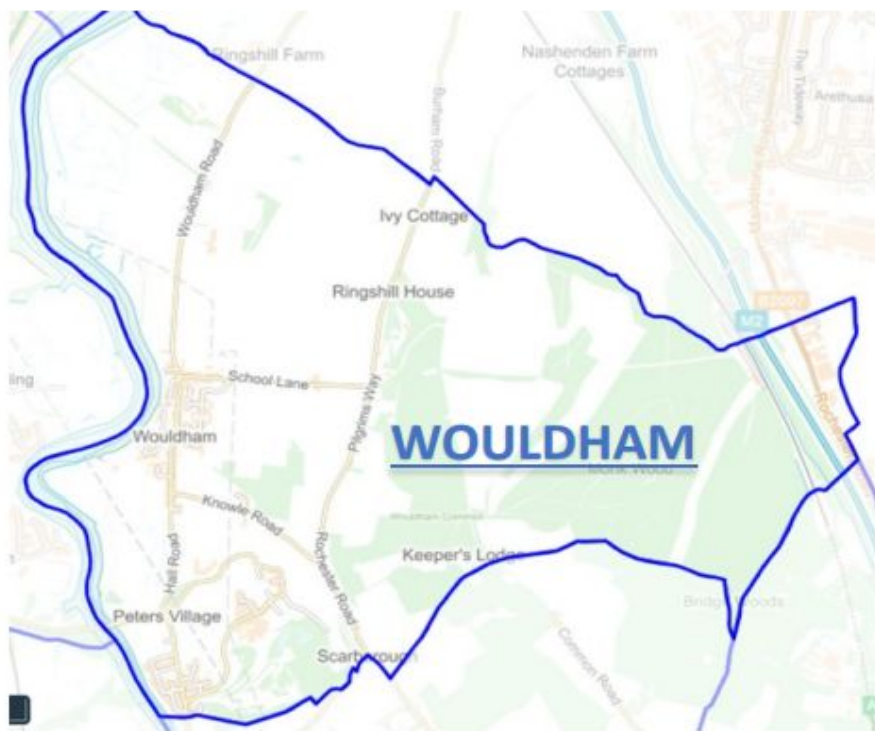
To book email [WouldhamVillageHall@gmail.com](mailto:WouldhamVillageHall@gmail.com).

## Magazine Advertisement

If you would like anything included in a future edition, please forward details by 10th July to allow us adequate time to get it into the August/September edition.

Email: [EditorWouldhamParishMagazine@gmail.com](mailto:EditorWouldhamParishMagazine@gmail.com)

|                                      |                |                  |                   |
|--------------------------------------|----------------|------------------|-------------------|
| SIZE 1 6Wx6Hcm<br>1/4 of A5 page     | 1 Issue<br>£10 | 5 Issues<br>£45  | 10 Issues<br>£80  |
| SIZE 2 12Wx6Hcm<br>1/3rd of A5 page  | 1 Issue<br>£15 | 5 Issues<br>£60  | 10 Issues<br>£100 |
| SIZE 3 12Wx12Hcm<br>2/3rd of A5 page | 1 Issue<br>£25 | 5 Issues<br>£100 | 10 Issues<br>£180 |
| Full Page A5<br>12Wx19Hcm            | 1 Issue<br>£30 | 5 Issues<br>£120 | 10 Issues<br>£210 |
|                                      |                |                  |                   |



Funded by: Wouldham Parish Council

[www.WouldhamPC.com](http://www.WouldhamPC.com)