

# **THE COMMUNITY MAGAZINE**



**BURHAM**

**WOULDHAM**

**PETERS VILLAGE**

**July/August  
2019**

**VISION IN THE VALLEY**

*Published by the Church of England Parish of Burham & Wouldham  
and sponsored by Wouldham Parish Council & Burham Parish Council.  
Produced and delivered by local volunteers.*

**THE CHURCH OF ENGLAND PARISH OF BURHAM & WOULDHAM**  
**All Saints Church, Wouldham**

**RECTOR—Rev'd Mike Hayes**

*Usual working days are on Thursdays, Fridays & Sundays.*

**Tel: 07964 697556**

**E-mail: [mikejhayes@hotmail.co.uk](mailto:mikejhayes@hotmail.co.uk)**

**CHURCH WEBSITE: [www.wouldhamchurch.org.uk](http://www.wouldhamchurch.org.uk)**

*Unfortunately at present the Church must be kept locked but arrangements for access can be made by contacting one of the Church Wardens:*

<i>Church Wardens</i>	<i>Mr Tim Reed Mr Ken Kirk</i>	<i>Tel. 01634 666895</i>
<i>Baptisms</i>	<i>Mrs Gwen Worcester.</i>	<i>Tel. 01634 672060</i>
<i>Weddings</i>	<i>Mrs Catherine Gore.</i>	<i>Tel. 01634 404742</i>
<i>Monuments &amp; Churchyard Enquiries</i>	<i>Rev'd Mike Hayes</i>	<i>Tel: 07964 697556</i>
<i>Church Flowers</i>	<i>Mrs Catherine Gore.</i>	<i>Tel. 01634 404742</i>
<i>Bell Ringing</i>	<i>Ms Tina Miles</i>	<i>Tel: 07967 795913</i>
<i>Church Treasurer</i>	<i>Mrs Nicky Grimes.</i>	<i>Tel. 01634 864319</i>
<i>Church Secretary</i>	<i>Mrs Gwen Worcester</i>	<i>Tel. 01634 672060</i>
<i>Church Magazine Editor</i>	<i>Mrs Mary Davis.</i>	<i>Tel. 01634 869650 <a href="mailto:zero.mexdavis247@btinternet.com">zero.mexdavis247@btinternet.com</a></i>

**View the Magazine online:**

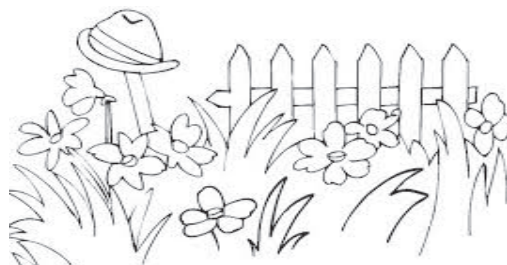
**Church Website: [www.wouldhamchurch.org.uk](http://www.wouldhamchurch.org.uk)**

**Wouldham Parish Council: [www.wouldhampc.kentparishes.gov.uk](http://www.wouldhampc.kentparishes.gov.uk)**

**Burham Parish Council: [www.burhampc.kentparishes.gov.uk](http://www.burhampc.kentparishes.gov.uk)**

Dear friends

This is our Summer edition so that the magazine can go on it's holidays and, most importantly, our wonderful band of deliverers can have a break.



Although we are taking a holiday, we will be setting up the September edition in August. So I will be sending round reminders about the deadline for that. Also, just get in touch if you would like to start adverting with us in September. Several advertisers are finishing so we will have space for some different size adverts. I can say that our advertisers do report a good response possibly because we deliver to every house in Burham, Wouldham and Peters Village. So have a look on page 33 for details about that.

You'll see that we're changing the format within so that information and activities are listed in a way to make it easier to see 'what's going on'. See our centre pages. If you've got information about a group or activity that you'd like to go in, just send me the details to include. Usually everything finds a space but please be aware that, by adding more, other items may have to be squeezed. The Editor has to complete this jig saw puzzle each month! Obviously there isn't unlimited space and, at the end of the day, the editor must reserve the right to edit or not to publish.



We are always looking for some more people who can deliver the magazines to a small area - particularly in Peters Village. We like to deliver a copy of this magazine to new residents there so that they can see some things that are going on locally but it's a bit of a challenge to keep up with the development.

So get in touch with the editor if you think you could do a little bit to help. Thank you.

Have a great summer whatever you're doing.

*Mary Davis, Editor*



## THANK YOU

A big thank you to those who donated so generously to 'Christian Aid' in May.

'Gift-Aided' donations add a further 25p per £1. So the final total received for Christian Aid from the villages is £1137.80.

Also I want to thank everyone who so generously gave their time delivering and collecting the donations.

*Gwen Worcester*

## SUMMER CREAM TEAS

with **tower tours** (lovely views from the top )  
& interesting **churchyard tours**

**All Saints Church, Wouldham**

**July 21st & 18th August, 2.0pm – 4.30pm**

Two home-baked scones with jam & cream and  
a bottomless cup of tea for £4-50p.

Or if you prefer, one scone with jam and cream and a slice of cake  
with tea at the same price.



## OPEN GARDEN

**In support of HEART OF KENT HOSPICE**

**Orchard House, 87 Boughton Lane,**

**Maidstone, ME15 9QP**

**Sunday 7<sup>th</sup> July, 2-5 pm**

Built amongst orchards in the early 1900's, hence its name, you are invited to visit the garden of Orchard House. This small country garden has been lovingly cared for by the owner with shaded alcoves where you can sit, rest and enjoy refreshments. As the garden is also surrounded by trees there is always interesting birdlife to note too. The garden has a small but active fish pond and a large swimming pool with a patio filled with Palms, Daturas and many Fuchsias.

Dogs welcome but must be kept on a lead.

Refreshments, toilets and parking available.

Suggested donation: £5.00 per adult, £1.00 for children, under 3s free.

*Dorothy Gorman, Volunteer – Fundraising*

# CHURCH OF ENGLAND SERVICES JULY & AUGUST



## JULY

**Every Friday, TODDLER CHURCH.**

9.15-10.15am **Term time only** All Saints, Wouldham

**Sunday, 7th July, Third Sunday after Trinity**

9.00am Said Holy Communion All Saints, Wouldham

4.0pm Taize style worship — Burham, St Marys Old Church  
- chants, readings & prayer

**Thursday, 11th July**

11.00am Winchester House Holy Communion. All are welcome

**Sunday, 14th July, Fourth Sunday after Trinity**

10.30am Sung Holy Communion & Baptism All Saints, Wouldham

**Sunday, 21st July, 5th Sunday after Trinity**

9.00am Holy Communion All Saints, Wouldham

Rev. Canon Liz Walker

10.30am, Messy Church (*see page 17*) Burham Community Centre

**Sunday, 28th July, 6th Sunday after Trinity**

10.30am Sung Holy Communion All Saints, Wouldham

Rev. Canon Liz Walker

## AUGUST

**Sunday, 4th August, 7th Sunday after Trinity**

9.00am Said Holy Communion Burham Community Centre

10.30am Holy Communion with hymns All Saints, Wouldham

**Thursday, 8th August**

11.00am Winchester House Holy Communion. All are welcome

**Sunday, 11th August, 8th Sunday after Trinity**

10.30am Holy Communion with hymns All Saints, Wouldham

**Sunday, 18th August, 9th Sunday after Trinity**

9.00am Holy Communion All Saints, Wouldham

**NO Messy Church** this month at Burham Community Centre

**Sunday, 25th August, 10th Sunday after Trinity**

10.30am Holy Communion with hymns All Saints, Wouldham

# Darren Emptage



## Stonemasons



### Your local Family run Monumental Masons

**We manufacture, letter and install new memorials for customers from our workshop in Wouldham covering Kent, Sussex, Surrey and London.**

**Our other services include renovating your old memorial to make it look almost new again.  
(examples can be found on our website)  
Additional inscriptions and making safe old memorials that have failed the strict council stability tests.**

**For further information, brochure and price list or a free no obligation renovation quote, please contact us by one of the following means:**

**Phone: 07806 633422**

**Email: [darrenemptage77@aol.com](mailto:darrenemptage77@aol.com)**

**Post : 77 Church Street, Burham, Kent ME1 3SB**

**Facebook page: Darren Emptage Stonemason**

**Internet: [www.darrenemptage.com](http://www.darrenemptage.com)**

# **Tonbridge & Malling Borough Council's Holiday Activities Brochure for Summer 2019 ....**



is now available (on the website below)

The brochure is aimed at young people ages 4-16 years and features a range of activities, workshops and clubs which are offered by local providers to help keep children stimulated and active during the holidays. Exciting activities including: bushcraft • pottery • cookery • fishing boxing • archery • climbing • tennis kayaking plus many more... Also including the 'Summer Playscheme'.

Many of the activities advertised include a 50% discount for families who are on low incomes and hold a Leisure Pass.

All bookings should be directed to each provider as stated in the brochure.

Details can be found on our website at:

**[www.tmbc.gov.uk/holidayactivities](http://www.tmbc.gov.uk/holidayactivities)**

Gemma Record, Leisure Development Assistant. Leisure Services. 01732 876177

## **THE HENRY PETERS CHARITY**

**This charity was set up by Henry Peters in his will around 1912 to be distributed to the sick and poor of Wouldham by the Parish Council. The trustees have agreed that the payments could be used to fund residents getting to and from the doctors' surgery or hospital. To apply please contact the Council clerk on 01634 864319 or [clerk@wouldhampc.co.uk](mailto:clerk@wouldhampc.co.uk).**

## **BURHAM UNITED CHARITIES**

**Burham United Charities are a local charitable organisation that provides assistance to those in need living within the old parish boundaries (i.e. Burham Village and parts of Blue Bell Hill).**

Every year the Charity gives grants towards the Winter Fuel costs of retired villagers on restricted incomes.

**They can also offer one off grants to help alleviate particular instances of hardship for any resident of the parish.**

Parents of school age children may obtain help with some of the costs associated with schooling.

**If you, or someone you know, is on a low income or has an exceptional need which is not provided for by Welfare Benefits, we may be able to help.**

**Contact: Dave Young (01634 867669) or Roger Kiralfy (01634 869900)**



## FRIENDS OF ST MARY'S BURHAM

### 2019 EVENTS AT ST MARY'S CHURCH,

**BURHAM** (down by the river)

*Come and join us in this beautiful setting*



THE CHURCHES  
CONSERVATION TRUST

**Flower Festival:** Saturday & Sunday July 13<sup>th</sup> & 14<sup>th</sup> 10-4pm  
**This is my Theatre - Wind in the Willows:** Sunday August 11<sup>th</sup> 3pm  
(double bill) **Importance of Being Earnest:** Sunday, August 11<sup>th</sup> 7:30pm

**Music Festival:** Saturday September 7<sup>th</sup>

**Art Exhibition:** Saturday & Sunday September 21<sup>st</sup> & 22<sup>nd</sup> 10-4pm

**This is my Theatre - Snow Queen:** Saturday November 23<sup>rd</sup> 2pm

**Carols by Candlelight:** Saturday December 14<sup>th</sup>

We will be posting dates of all these events on our facebook page  
**[www.facebook.com/stmarysburham](http://www.facebook.com/stmarysburham)** Or call Rosie 01634 672346

We hope you will be able to join us.

<p>St Mary's Old Church Burham (down by the river) Old Church Road, ME13XY</p> <p><b>Flower Festival</b> <i>with a BOOK theme</i></p> <p>Saturday and Sunday July 13/14th Open 10-4pm</p>  <p>For more details and if you would like to take part visit <a href="http://www.facebook.com/stmarysburham">www.facebook.com/stmarysburham</a></p>	<p>FREE ENTRY</p> <p>Tea, coffee, and homemade cakes available</p> <p><i>The</i> <b>Wind</b> <i>in the</i> <b>Willows</b></p> <p><b>3pm</b></p> <p>based on the novel by Kenneth Grahame</p> <p>2 SHOWS TO DELIGHT AUDIENCES THIS SUMMER!</p> <p><b>St Mary's Church, Burham</b> <b>11th August</b> Tickets in advance: <a href="http://www.thisismytheatre.com">www.thisismytheatre.com</a> / 07732 253311</p> <p><i>Performed by just 2 actors - a huge, out loud, comedy!</i></p> <p><i>The</i> <b>Importance</b> <i>of Being</i> <b>EARNEST</b></p> <p><b>7.30pm</b></p> <p>BY OSCAR WILDE ADAPTED BY SARAH SEAYOR</p>
--	--



# JULY/AUGUST

## 'The Church in Burham' Services

All services and meetings at the church, Church Street, Burham



### **Sunday, 7th July,**

10.30am Morning Worship led by Julien Myles

### **Sunday, 14th July,**

10.30am Morning Worship led by Irene Shepherd

### **Sunday, 21st July,**

10.30am Holy Communion led by Rev. Noreen Daley - Lee

### **Sunday, 28th July,**

10.30am Morning Worship led by David Newell

### **Sunday, 4th August,**

10.30am Morning Worship led by Simon Pooley

### **Sunday, 11th August,**

10.30am Morning Worship led by Geoff Harris

### **Sunday, 18th August,**

10.30am Morning Worship led by the Worship Group

### **Sunday, 25th August**

10.30am Morning Worship led by Trish Robb

### **CHARITIES**

In July & August, we are supporting **Medecins Sans Frontieres** which organises medical teams to save people's lives in conflict zones, after natural disasters and during epidemics.

***For other activities at The Church in Burham, including teas, Country Lunch, Film Club and Book Exchange, please see the 'What's Going on?' centre pages in this magazine.***

**THE CHURCH IN BURHAM (Methodist), Church Street, Burham**  
**MINISTER Rev. Noreen Daley-Lee Tel: 01732642581**

*Stewards Eileen Smith Tel. 01634867022 Joyce Brown Tel. 01634864413*

*Rod Murr Tel. 01634868075 Trevor Smith Tel. 01634867022*

*Requests for Baptisms, Weddings, Funerals to: Rev Noreen Daley-Lee or one of the Stewards.*

# L&K TAXIS

**Air Conditioned, 8-Seater  
Mini Bus**



*8 Passengers plus Luggage*

**Airport Transfers**

**Dock Transfers**

**Fully licensed**

**Weddings**

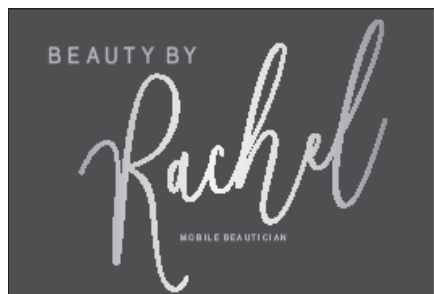
**Parties**

**Long Distance Journeys**

**Telephone: 07514474939**

## BEAUTY BY RACHEL

### Mobile Beautician



Fully qualified & insured.

15 yrs experience. Flexible hours.  
Based in Wouldham and covering  
surrounding areas.

**Rachel on: 07740103757**

**[beautybyrachel85@gmail.com](mailto:beautybyrachel85@gmail.com)**



10% off your first treatment

Check out my Facebook page for treatments & prices.



## Curious Yoga Connections

### Local Yoga Class.

suitable for all

**Eccles School Hall (Term Time)  
Thursday 7 till 8.30pm**

£10 drop-in (£40 for 5)  
British Wheel of Yoga Teacher

**Call Mary on 0790 666 5778**

[www.curiouslyogaconnections.co.uk](http://www.curiouslyogaconnections.co.uk)

## DECOR BY DEENA

**Qualified,  
Female Painter  
& Decorator**



**A Professional,  
Friendly & Reliable  
Service**

Please call Deena for a  
free quote. Tel 07950222371

Email

**[decorbydeena@gmail.com](mailto:decorbydeena@gmail.com)**

## **Wouldham All Saints Church of England Primary School**

As we reach the final month of the school year we begin to start thinking about both looking forwards to the new year ahead but also back at all the amazing things that have happened since last September.

Being the headteacher of a school is an amazing job as you get to see the growing and developing of the children. Seeing how much confidence has been moved on or how much more independence is being demonstrated is always very rewarding.

Talents grow and shine out brightly in all sorts of ways and the end of the school year is a special time for thinking about this.

One of the best things that was new for us during the last year was the introduction of 'Make a Difference Days'. These were about classes choosing a day to spend on learning about something that makes a positive difference to the world we live in. These days have been varied and have included raising money for charities, clearing rubbish, preparing teas for older members and much more. In all cases there has been learning about a cause or charity and how they help others in need whilst preparing some sort of event or activity to help that cause. This is something we will continue with in the future and it will be good to see what the children want to support in the next year.

Our numbers continue to grow and we are expecting both of our Year R classes to be full for the start of the new school year in September. We are also hoping to be able to provide 2 classes of every year group right through the school. Unfortunately, finding the teachers as well as the funding is an enormous challenge and possibly could restrict possibilities but should all be sorted by the time this article is published.

We're afraid you'll have to wait until September to find out who we are welcoming to the team!

We are welcoming plenty of new families into our school and wish you a very settled and exciting start – especially for those beginning 'big school' for the first time. Our induction programme is already running and we look forward to seeing you all in school at the different events and occasions. It won't be long and you'll be proudly wearing your new uniform as you enter Dove and Wren Class in September!

We break up on Tuesday 23<sup>rd</sup> July – at normal time and look forward to our annual water fight with record numbers! Children return on Wednesday 4<sup>th</sup> September although Year R don't start until the following Wednesday. We wish you all a very happy summertime!

# **BURHAM**

## **PARISH COUNCIL NEWS**

### **JULY/AUGUST 2019**



Keep up to date with Parish Council business, visit:

**Website:** [www.burhampc.kentparishes.gov.uk](http://www.burhampc.kentparishes.gov.uk)

**Facebook page** “Burham Parish Council”

At the May meeting, Cllr Dalton was nominated and accepted the position of Chairman and Cllr Stead and accepted position of Vice-Chairman, both for a 12 month period. We also co-opted two new Councillors. We welcome Cllr Bell & Cllr Imboden to the team.

There are still two Councillor positions available, so if you are interested or would just like to know more, give me a call or pop into the office.

As a reminder, if you wish to place anything on the highway (i.e. cones, skips etc.) permission should be sought from KCC Highways as the highway authority in the form of a license or permit. We have received comments in relation to reserving parking spaces in Rochester Rd with cones. Whilst the reasons behind it may be morally strong from a certain point of view, legally you do have to seek the permission from KCC Highways to do so. Parking can be difficult in the village and reserving places is unfair unless the correct procedures have been followed.

All the monthly meeting dates for the next 12 months have been set and have been added to the calendar on the website.

A tree planting photo opportunity took place to mark the lease on the land between Court Rd and New Court Rd. (see page 29) Also we are seeking assistance from residents to name the area – if you have any suitable names – please let me know.

Please remember to collect and dispose of your dog poo appropriately. There are many bins around the village for this purpose.

The planting areas in Whitehouse Crescent green have now been planted up with geraniums – this is only a temporary measure to allow the soil to improve. Next years’ planting should be better.

There are still some outstanding highway matters in the village which have been on-going for a while. We are still pursuing these, including road signage on the spur road between Court Rd and New Court Rd, and speed limits in Church Street (NCR end).

We are happy to advise that Cllr Homewood as our County Councillor, has approved the funding for Church Street Gateway section. We await further information from KCC Highways.

*continued .....*

*continued* .....

Many thanks to Cllr Homewood for financing the project.

As a reminder, please comply with the speed limits in the village. These are there for the safety of all. With the summer weather (hopefully) and residents/people out and about more than the colder months, it is of utmost important that the speed limits are adhered to.

**If you have any items that you would like the Parish Council to discuss, just give me a call on 01634 685936, e-mail me on [pam@burhampc.co.uk](mailto:pam@burhampc.co.uk) or come along to the monthly meetings, normally held the last Monday of the month. The next meeting is scheduled for Monday 29 July 2019, 7.30 pm The Parish Building, ROCHESTER ROAD, BURHAM. Septembers meeting is scheduled for 30<sup>th</sup>.**

**Pam Saunders – Clerk.**



**Join us in the Old School Community Centre for a ....**

## **Social Night**

**Monday 8<sup>th</sup> July, 7:30pm – 9pm**



**Bring along a game**

**ALL welcome!**



**Free refreshments included**

***Psst...Look out for future events, including details of our fortnightly ramble, via our Facebook page.***

**If you would like to help out in anyway, or offer new ideas, or are just curious to see what we are about, please do drop by.**

# WOULDHAM PARISH COUNCIL



The previous PC meeting was on June 3<sup>rd</sup>, the next one will be July 2<sup>nd</sup> in the Village Hall, 7.30pm. All welcome. The agenda is on the notice boards and website: [wouldampc.kentparishes.gov.uk](http://wouldampc.kentparishes.gov.uk)

**CAR PARK.** By now the car park should be finished, the PC would like to thank CW Surfacing who have done an excellent job. The increased spaces, disabled bays and professional finish are an asset to the village. The PC are discussing the building of new bus shelters and the best position for the stops in the village. 2 PC Councillors attended a meeting with Arriva and TMBC organised by KCC to discuss the 155 route. The report on this meeting is on our website.

**NEW VILLAGE HALL.** We now have outline planning permission for the current village hall which we would have to sell to purchase a new hall on the Recreation Ground. We have all the costings for a new hall so next step will be to put the hall on the market. We'll keep you informed.

**REPORTING TO KENT COUNTY COUNCIL.** KCC are in charge of cutting back hedges, verges, repairing pot holes, signposts, streetlights etc. It is easy to report any of these, their online reporting tool is easy to use or you could call them. Kent.gov.uk – roads and travel – report a problem. Or 03000 414141

**POST BOXES FOR PETERS VILLAGE.** The PC have written to the Post Office requesting post boxes in Peters Village. For the second time we have been told that someone will “be in touch”. We have informed them that there only 2 post boxes for the whole of Wouldham so hopefully we will have more news soon.

**MEDWAY CORNER.** The PC are asking KCC to remove the build out opposite the Medway Inn. We think this would help buses navigate this dangerous corner and prevent them having to mount the pavement by the Inn. We have discussed this in the past with KCC but they wanted to change the priority which we didn't think would improve the traffic situation. We are asking our Borough Councillors and County Councillor to push this for us.

**TELEPHONE BOX.** The old telephone box is still standing forgotten and forlorn. Would anyone like to put something in here? There are lots of ideas online, if you would like to please get in touch.

**FUN DAY.** The Wouldham Fun Day happened on May bank holiday, a great time was had by all. The PC would like to thank Martin Jukes and all his helpers for organizing the day.

*continued....*

*continued...*

**COMMUNITY AWARD.** The PC applied for the KALC Community Award for the Gore family for the work they did clearing the roads during the heavy snow in 2018. Jenny Head presented the certificate to Tom Gore. We are very grateful for the work they did during that difficult week.

**CONTACT DETAILS: Clerk Nicky Grimes**

**clerk@wouldhampc.co.uk 01634 864319.**

**Chair Jenny Head jheadwpc@gmail.com**

## **NEW GARDEN WASTE BIN COLLECTION – EARLY BIRD DEALS**

**Current collections of organic waste from the green-lidded bin ceases on 27 September.**

**From 30 September, the new garden waste service becomes an ‘OPT-IN SERVICE’ at £40 per year.**

**However if you sign up for the service before 2<sup>nd</sup> August you can get your first bin for £35 per year, held for 2 years.**

**You can have up to 3 bins, with the 2<sup>nd</sup> and 3<sup>rd</sup> bins costing £25 each. This is all part of Tonbridge and Malling Borough Council’s new waste kerbside services, which will provide:-**

- **Weekly food waste collections, using a new small bin (to be provided);**
- **Fortnightly collections of mixed dry recyclables (plastics, cartons, tins, cans and glass), using your green-lidded bin**
- **Fortnightly collections of paper & card, using your green box**
- **Fortnightly collections of textiles, household batteries and WEEE (waste electrical and electronic equipment) and—**
- **Fortnightly collection of waste which can’t be recycled, using your black bin;**

**PLUS:**

**Fortnightly collections of garden waste using a new brown bin if you “opt-in” to the service**

**Full details can be found on TMBC’s new website:**

**[www.tmbc.gov.uk/recycleforall](http://www.tmbc.gov.uk/recycleforall)**



## BURHAM CHURCH OF ENGLAND PRIMARY SCHOOL



COMPASSION, ACCEPTANCE, RESPONSIBILITY,  
FORGIVENESS, TRUST

It is hard to believe that we are now in the last half term of this academic year, but as always, life in the school is still very busy. We are pleased to say that we are also still welcoming new children to the school as the school roll continues to grow.

Having completed their SATS before the May holiday, our Year 6 children are now having a half term packed with lots of activities before they leave us to start at their new secondary schools. On 14<sup>th</sup> June they joined pupils from other local schools at Rochester Cathedral for the Church Schools Celebration, while on 28<sup>th</sup> June they visited Maidstone Grammar Girls School to see their WWII tunnels and find out about what life was like at school during WWII. The Second World War is their topic for this term, fitting in with the 75<sup>th</sup> Anniversary of D-Day.

As well as all of this, Year 6 have continued with their Enterprise to raise funds for their end of year trip and on 21<sup>st</sup> June they completed a sponsored walk from school to Aylesford Priory. Their end of year trip will be a visit to Harry Potter World on 8<sup>th</sup> July.

This term there are also a lot of trips planned for our other pupils including the Rare Breeds Centre in Ashford for Years 3 and 4, the Lower Grange Activity Centre for Years 5 and 6, and a trip to the British Wildlife Centre for children in Key Stage 1. In addition to all of this, we also had some fun in school when we hosted a Circus Skills Workshop for all the children on 17<sup>th</sup> June.

In the week commencing 1<sup>st</sup> July we have several parents coming in to talk to Year 6 about their career paths. Year 6 will be looking at ways they can reach their goals, including resilience. Also in July we will welcome our new Reception Class and their parents into school for a taste of what life will be like when they join us in September.

We will be holding our Family Fun Day on Friday 5<sup>th</sup> July. This will be followed by the school's annual Summer Fair on Saturday 6<sup>th</sup> July from 11.30am-3.30pm. The Fair is open to the whole community and we will have a mixture of stalls and games as well as entertainment, inflatables, go-karts, a licensed bar and BBQ. We hope that you will be able to join us.



*continued.....*

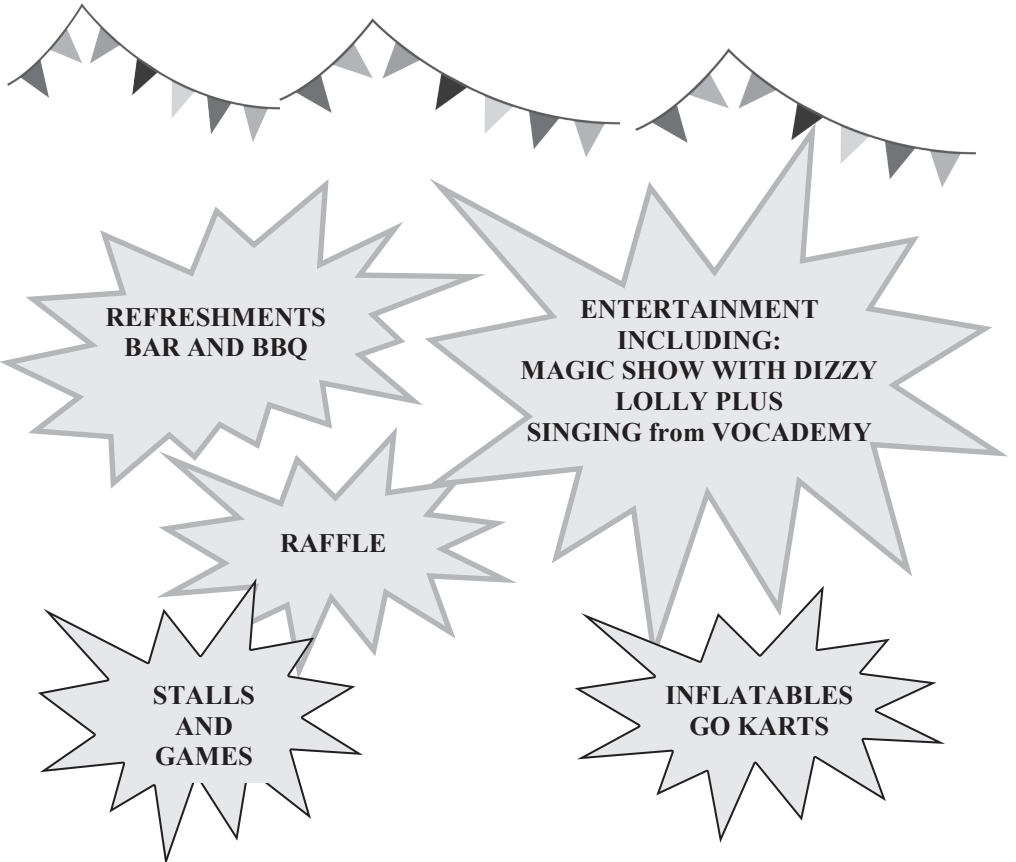
School finishes for the Summer holidays on Friday 19<sup>th</sup> July and we would like to take this opportunity to wish our Year 6 children well as they continue their educational journey and move on to secondary school. As always, all updates relating to our school can be found on our website [www.burham.kent.sch.uk](http://www.burham.kent.sch.uk) If you would like to get involved with our PTFA please do get in touch [office@burham.kent.sch.uk](mailto:office@burham.kent.sch.uk)

## **BURHAM C of E PRIMARY SCHOOL**

### **SUMMER FAIR**

**SATURDAY 6th JULY,**

**11.30am-3.30pm, on the SCHOOL FIELD**



## PARISH INFORMATION

### Burham Parish Council

Pam Saunders – Clerk.

The Parish Office, Rochester Road. Burham. ME1 3RJ

Opening times: Mon-Frid., 10am—2pm

Tel: 01634 685936. Email: [pam@burhampc.co.uk](mailto:pam@burhampc.co.uk)

[www.burhampc.kentparishes.gov.uk](http://www.burhampc.kentparishes.gov.uk)

The next Council meeting: 29th July, 7.30pm. Usually the last Monday in the month

### Wouldham Parish Council

Parish Clerk—Nicky Grimes 01634 864319 [clerk@wouldhampc.co.uk](mailto:clerk@wouldhampc.co.uk)

[www.wouldhampc.kentparishes.gov.uk](http://www.wouldhampc.kentparishes.gov.uk)

Council Meetings are held in Wouldham Village Hall. The next meeting: 2nd July, 7.30pm. Usually on the first Tuesday of the month.

Community Warden:- Vivien Hickmott 07813694140

Police - PCSO Jo-Anne Tiller, non emergency tel no. – 101

3 Defibrillators: Situated: 1. Outside Burham Parish Office.

2. Outside Wouldham Village Hall. 3. Outside Wouldham Village Store. If a machine is needed, call 999 for the code and instructions.

## SATURDAY WASTE COLLECTION

*TMBC Helpline 01732 876147 [www.tmbc.gov.uk](http://www.tmbc.gov.uk)*

Wouldham - Car Park, Knowle Rd,  
6 July & 3 August, 8.00am–9.00am.

Burham, Village Hall Car Park,  
6 July & 3 August, 9.15am -10.15am

Eccles – Bull Lane lay-by.  
6 July & 3 August, 10.30- 11.30am  
20 July & 17 Aug, 8.00am—8.45am

Snodland- Saltings Road  
(outside Neville Park)  
13 & 27 July, 8.00am—9.00am  
10 & 24 August, 8.00am-9.00am

Snodland—St Benedicts Rd,  
junction of Paddlesworth Rd.  
20 July & 17 Aug, 8.00-9.00am

All sites on the Saturday Service have **WEEE** collection ie- Waste, Electrical, Electronic, Equipment & **scrap metal items** at the same time that Veolia's vehicles are on site.

*Do not leave waste unattended at the collection sites or in advance of the waste vehicles arriving*

## CHURCHS

**Church of England Parish of Burham & Wouldham:** *(See page 3)*

1. **All Saints, Wouldham. Parish Church.**
2. **Burham Old School Community Centre:**
  - (i) Messy Church – 3rd Sunday of the month 10.30-12 noon.  
Rod Murr 01634 868075. For all ages. Games, painting and many other activities and a special bible story. Refreshments.
  - (ii) 9.00am Early morning communion. 1<sup>st</sup> Sunday of the month.
3. **St Marys Church,** Old Church Rd, Burham is a redundant Anglican Church under the care of the Churches Conservation Trust. Occasional special C of E services held there *(page 3)* and events run by the Friends of St Marys. *(page 6)*

**Methodist. The Church in Burham** *(page 7)*

## HALLS FOR HIRE

**Burham Old School Community Centre – 01634 863322**

**Burham Village Hall – 07842883028**

**‘The Church in Burham’ Hall – 01634 867022**

**Wouldham Village Hall – 01634 864319 [clerk@wouldhampc.co.uk](mailto:clerk@wouldhampc.co.uk)**



## **Phoenix Medical Practice**

33, Bell Lane, Burham,

Rochester. ME1 3SX.

Tel: 01634 867982.

### **Opening times**

Monday & Thursday: 8:30 am - 5:00 pm

Tuesday, Wednesday & Friday: 8:30 am - 6:00 pm

### **Dispensary Opening Times**

Monday & Thursday: 8:45 am - 12:00 pm

2.00 pm – 4:45 pm

Tuesday, Wednesday & Friday 8:45 am - 12:00 pm

3:30 pm – 6:15 pm

[www.phoenixsurgery-burham.nhs.uk](http://www.phoenixsurgery-burham.nhs.uk)

# What's Going On?

## SOCIAL GROUPS & MEETINGS

**Women's Institute** - 3rd Tuesday of each month at the Burham Village Hall. 7.30pm. Contact Eileen Smith 01634 867022.

**Wouldham 60+CLUB.** Social afternoon for over 60s. Meeting Tuesdays, 2-4pm at the Watermans Arms, Wouldham

**Burham Meeting Place** - A Community Group socialising with events for the whole community. Meeting once a month on a Monday evening, 7.30pm till 9pm usually the second Monday of the month. (*see page 11*)

**Thursday Community Club** - Burham Community Centre, 10.30-12pm. Tea, coffee, cakes. Friendly gatherings & outings. July 11, 18, 25 & August 1, 8, 15, 22, 29 . No Club on the 4<sup>th</sup> July as we are going to Eastbourne for the day. Contact - Betty Young 01634 867669

**Afternoon Tea** The Church in Burham, Church St. 3.0pm. every Tuesday in July & August. Join us to enjoy a cup of tea and cake, a fun quiz and good company. All welcome. Contact Trevor Smith 01634 867022

**Coffee Morning.** All Saints Church, Wouldham. Last Friday of the month 10.45 –11.45am. 26th July & 30th August. Just come along.

**Men's Supper** All Saints church, Wouldham. Evening Supper together & a speaker. Contact Dennis Worcester for dates & catering. 01634 672060

**Country Lunch** - Thursdays once a month. 1pm, 11th July & 8th August in The Church in Burham, Church St. Soup with Crusty Bread & Cheese, Fruit Crumble and Ice Cream, Tea or Coffee. We ask for a donation of £3 and all profits are go to our charity of the month. Contact Trevor Smith 01634 867022

**Cream Teas.** All Saints Church, Wouldham July 21st & 18th August, 2.0pm – 4.30pm. Summer months only. (*see page 2*)

## CRAFTS

**Bear Paws Quilters** in Burham Community Centre. Meeting twice a month on a Wednesday. Many talented people with varied abilities in all areas of needlework. 7.30-9pm. Contact Mrs Taylor 01634 861781

## ALLOTMENTS

Different size allotments are available to grow your own fruit and veg.

**Burham.** Contact- Dave Young 01634 867669.

**Wouldham.** Contact Sue: 682363<sub>18</sub>

## **BOOKS**

**Book Club** - Meet 3rd Wednesday of the month at various venues.  
Contact - Gwen Worcester 01634 672060.

### **KCC Mobile Library: Fortnightly on Tuesdays:**

**JULY: 2nd, 16th, 30th.      AUGUST: 13th, 27th**  
**Wouldham, Walter Burke Ave** - 13.15-13.45hrs.  
**Wouldham, Ravensknowle** - 13.55-14.25hrs.  
**Burham, Village Hall** - 14.35-15.35hrs (*use us or loose us!*)

**Book Exchange** - 1st Saturday of the month. The Church in Burham, Church St.10.30-12 noon. Bring books you have read and exchange them for others from our good selection. Serving tea, coffee & homemade cake. Contact Trevor Smith 01634 867022.

## **ACTIVITY/SPORT**

**Burham Baton Twirlers** -Village Hall every other Thursday 4.15-30pm.  
Contact Lyn Robinson 07729 373558.

**Burham Blue Bells Dance School.** Sat 9.30-12noon in Community Centre  
3 years and above. Contact - to be confirmed.

**Duet Dance School** Fri 3.30-7pm. Julie Potter/Hayley Mann.  
*duets\_dancer\_school@yahoo.com*

**Burham Football Club** - Contact Paul Fitzpatrick 07805198937.

**Force Medway Group** - Self Defence in Burham Village Hall.  
Tues 7.30-9.30pm. Weds 6-7.15pm. Fri 6-8.30pm.  
Contact Stuart or Lorraine Lowe 01634 862943

**Short Mat Bowls** Monday & Wednesdays in Burham Village Hall,  
7.30pm - 10pm. New Members are always welcome. Contact - Irene Benton 01634 867466

**Windmill monthly dog walks** from The Windmill Inn, Burham at 10am.  
Advertised in the Windmill. Afternoon tea there afterwards.

**Rambles** are organised fortnightly. Evenings are best time to contact  
Jane Gilbert: 01634 682910.

**Flower Festival:** St Marys Church, Burham.  
Saturday & Sunday July 13<sup>th</sup> & 14<sup>th</sup> 10-4pm. (*see page 6*)

## **TRANSPORT**

155 Bus Services by Arriva and  
155 Evening Service, Nu-Venture - 01634 283600 & 01622 679000.  
A Free Bus to Tesco leaves Wednesday, 10am from Burham village only.

## What's Going On?

### HEALTH

**Prescriptions.** If you are unable to collect your prescriptions and live in Burham, Wouldham or Peters Village, the Church offers a collection service. Contact: Rachael Harris. 07725289194 *The surgery require 72 hours to prepare the prescription and the volunteers collecting these prescriptions need 24hrs notice.*

**Hearing Aids.** HiKent Hearing Clinic, monthly-11th July. But not in August. Burham Community Centre. Aftercare clinics for NHS hearing aids. Free of charge & open on a drop-in basis. No need for an appointment. Trained volunteers are able to change batteries, clean and re-tube hearing aids while you wait. <https://hikent.org.uk/>

### EATING & DRINKING

The Butchers Block Pub/Restaurant, Burham - 01634 786626

The Robin Hood Pub/Restaurant. Common Rd, 01634 861500

The Windmill Inn /Restaurant, Burham - 01634 864570

Happy House Chinese takeaway, Burham - 01634 668326

Fish & Chips Van, Wednesday, 5-8pm. Burham Hall Village Car Park

Medway Inn/Rubys Indian Restaurant & Takeaway, Wouldham. 869181

Waterman Arms, Wouldham. Sunday lunch and Friday afternoon tea.

01634 681830

### THEATRE/MUSIC/FILM

**This is my Theatre.** St Marys Old Church, Burham. Double bill on August 11th (*see the details on page 6*)

**Burham Music Hall Group.** Meeting from September weekly on Thursdays, 8.0pm, Burham Village Hall. Planning & rehearsals for Music Hall performances in March 2020. New members sought and welcome. Just come along.

**Film Club** 1st Wednesday of the month. 7.30pm, **3rd July** Not August.

The Church in Burham, Church St. Do join us to watch ‘**A Patch of Blue**’ starring Elizabeth Hartman and Sidney Poitier and share tea & coffee after. Donation of £1. Contact Trevor Smith 01634 867022.

**Church Choir. All Saints Church Choir.** Choir practice is on Thursdays, 7.30pm, All Saints Church, Wouldham. New junior and senior members are most welcome. Enquiries: Sandra Holman: 01634-867586

**Church Bell Ringing** All Saints Church, Wouldham. Practice: Wednesdays at 8pm. New ringers are welcome. Tina Miles Tel: 07967 795913

## **BURHAM CHILDREN'S CENTRE**

**Bell Lane, Burham. ME1 3SY Tel: 03000 418008**

Free sessions for children aged 0-5 years— **TUESDAY, & FRIDAY**

Closed on **Monday, Wednesday & Thursday**

**3rd Tuesday of the Month only 1.00pm –3.00pm. Well Baby Clinic.**

**Development Reviews 1.00pm-14.30pm**

Come and get your child weighed and speak to a health visitor.

**Friday am 9.30am –10.30am. Baby Stay & Play** Birth - Crawlers

**11.00am—12.30pm. Stay & Play.**

You can now register for the Children's Centre online:

**[www.kent.gov.uk/ccregistration](http://www.kent.gov.uk/ccregistration)**

**email: [tmcc@kent.gov.uk](mailto:tmcc@kent.gov.uk)** Like us on Facebook & for all the latest updates:

**[www.facebook.com/Tonbridge-and-Malling-Childrens-Centres](http://www.facebook.com/Tonbridge-and-Malling-Childrens-Centres)**

## **BURHAM PRE-SCHOOL, BURHAM VILLAGE HALL.**

'Good ' OFSTED inspection - April 16.

We welcome children aged 2 -5yrs.

Sessions:

Mon - Fri\* am 9.15 - 11.45.

\*Fri. am is for rising 5's only

Mon - Fri pm 12.20 - 2.50.

Mon - Fri. Lunch Club 11.45 - 12.20

Optional 'early bird' drop off at 9am for £1.0.

Come along and visit to see if we are right for you!

Visit our website: [burhampre-school@weebly.com](mailto:burhampre-school@weebly.com)

Supervisor - Tracey Beechey Tel: 07920 599287/07710 829954

Email: [Burham.pre-school@hotmail.com](mailto:Burham.pre-school@hotmail.com)

## **JELLYBEANS PRE-SCHOOL, WOULDHAM VILLAGE HALL**

Our Ofsted Inspection found Jellybeans to be 'good'.

Sessions :

Mon - Fri am 9.15-11.45

Mon - Thurs pm 12.25 - 2.55

Mon - Thurs Lunch Club 11.45 - 12.25

Early drop off option available.

Feel free to visit at any time, no appointment necessary.

For further information please contact-

Mrs Donna Cook (Supervisor) on 07932551771



## **BARKLEY DOMESTIC & COMMERCIAL CLEANING**

No job too big or small.  
All housework, offices & builders  
cleans. House clearances. Weekly,  
fortnightly, monthly & one off  
cleans. 2hrs minimum.

**ELAINE BARKLEY**

07979082097

01732 321167

elainebarkley1965@gmail.com

“Cut out the middle man; Come straight to the Maker”

## **Sonia Dowsett**

### **SOFT FURNISHER & CURTAINS**

Fabric Samples are available to look  
at in the comfort of your home.  
Have your own fabric made up  
to your bespoke requirements.

Moving House and want to take your curtain with  
you? We can help with resizing and fitting.

**ESTABLISHED SINCE 1985**

Fast & Friendly Service!

As seen on BBC's DIY SOS.

Facebook:

**Tel: 01634 352 318**

**Mobile: 07715 629 791**

Sonia K Curtains

**Email: sonia68@hotmail.co.uk**

**Web: soniakcurtains.co.uk**



## **BARK IN STYLE**

## **DOG GROOMING**

**Kerry Whiterod**

**07506 790946**

City & Guilds Qualified

Fully insured

Kits Coty, Salisbury Road,  
ME20 7EW

## **Paul J. Rowland**

Independent Funeral Directors

Maidstone:

15 Mid Kent Shopping Centre,  
ME16 0PU - 01622 757177.

Penenden Heath, ME14 2JP -  
01622 662661

*24 Hours a Day ~ 365 Days a Year*  
We offer a full range of services and  
facilities, home arrangements at your  
convenience.

Free car parking

Company Director: Paul J. Rowland

## **T.T CARPETS AND FLOORING**



**Domestic & Commercial**

**Tom Whiterod  
Supply & Fit**

**01634 669033 / 07957757905**

**T.TCARPETSANDFLOORING@  
YAHOO.COM**



## **Elwood Painting and Decorating Services**

**Qualified female  
Painter and Decorator.**

**10 years experience**

Interior and Exterior painting

Wallpapering

No job too small

Free quote

Email:

*elwoodpainting@tiscali.co.uk*

**Telephone:  
01634 308933  
07738083474**



# Winchester House Nursing Home, Wouldham

Website: [www.barchester.com](http://www.barchester.com) Tel: 01634 685001



Well our very first reading group with Holmesday School was amazing, I stood back and watched the Children interacting with our residents, taking an interest in each other and just making new friends. Our first session was all about getting to know each other and now we move on to sharing books, playing games and just having some good old fashion fun....

Every Friday for the next 5 weeks at 2pm the children will be here with Mr Ryan Badham the teacher who organised this wonderful venture. We will continue to let you know how we get on.

Our Kingfisher boat trips are well underway and we are trying to get as many of our lovely residents out on these trips. At times we have a couple of spaces available on the boat as we only have limited space on minibus, so if anyone from the villages are interested in joining us, give us a call and we can let you know dates and times and put their names of the list. They would just have to be able to get to Watlington . Just an idea.

Kathy from Wouldham continues to visit with Rosie every week our wonderful pet therapy dog and the responses and reactions are just truly amazing. Our gardens are looking fabulous thanks to the hard work and dedication from Billy who is truly dedicated and shows so much passion in all he does and he always has a big smile on his face. What is his secret..... also Dennis Worchester who gives his time and has been coming in daily and spreading his magic and getting the Lafarge courtyard ready for our 1940's street party. By the time this comes to print the party would have taken place and we hope you are all talking about stepping back in time and that it was the best party ever...

Our doors are always open just check our website to see what's going on and you are always welcome to pop in for a cuppa and join the fun. This week it's Game Show week and we are playing all the old favourites, Play Your Cards Right, Family Fortunes, Blankety Blank, Name that Tune.

Always something going on at Winchester House.

Contact us to  
make a  
booking or  
request a  
brochure



Or visit our  
stand at  
Dockside  
Outlet

Unit B1 Vicarage Lane, Hoo. Rochester, Kent  
ME3 9LB

Email: [bookings@farleighcoaches.com](mailto:bookings@farleighcoaches.com)

Tel 01634 254009

Web: [www.farleighcoaches.com](http://www.farleighcoaches.com)

## A Selection of Tours for 2019

**Monday 29 July**—5 days Whitby. 4 nights dinner, bed & breakfast at the 3\* Saxonville Hotel. Excursions to Scarborough and a scenic drive on the Yorkshire Moors including a visit to Goathland. £425pp.

**Monday 5 August**- 5 days Stafford. 4 nights dinner, bed & breakfast at the 3\* Tillington Hall Hotel. Excursions to Trentham Gardens, Stafford and the National Arboretum at Burton on Trent. £309.

**Friday 6 September**, Cardiff and the Royal Mint.

2 nights dinner, bed and breakfast at the 3\* Park Inn by Radisson Cardiff North Hotel. Excursions to the Royal Mint Experience and Cardiff City Centre. £189

**Thursday 12 September** – BLACKPOOL ILLUMINATIONS.

4 nights dinner, bed and breakfast at a hotel ideally situated on the north promenade - £284 pp.

**Monday 30 September**, Yorkshire Delights 4 nights dinner, bed and breakfast. The 4\* Old Swan hotel in Harrogate. Excursions to York and a Skipton Canal Cruise from £339

**Friday 11 October**, Plymouth, 3 nights dinner, bed and breakfast at The 4\* Jurys Inn Hotel in Plymouth City Centre. Explore Plymouth or take an optional excursion to the Eden Project or have a go on the longest and fastest skywire in England at Hangloose Adventure - from £259.

**Monday 21 October**, Weymouth, 4 nights dinner, bed and breakfast at the Berkeley hotel. Excursions to Athlehampton House, Dorchester, Poole and Swanage. £259

Farleigh Coaches also offer a fantastic array of day trips.  
These too feature in our brochure.

## July/August in your Garden

*'Life is like a flower, when we don't take care of it, it can wither & die.'*

Summer is here, & both the garden & veg plot is at its most glorious. While the long days and warm weather are here, the number one thing to do is to enjoy your space.

If, amongst the enjoyment, you find a few spare minutes to do some jobs, make watering any pots, and dead-heading top of the list. Its easy to forget that pots dry out really quickly, and that rain will very rarely make it into the soil as its covered by the plants foliage, so water regularly. This is even more important if you're growing fruit and veg in pots – productive plants are working hard at this time of year to produce their crops, and if they're in pots they will need regular water and feed to encourage a plentiful crop. So if you're going away over summer, make plans to ensure your prized crops and pots are looked after. To make this easier, group everything together in a shady spot if possible – this creates a micro-climate where plants will lose less moisture. Place them in a large tray which will hold water too so that water is stored for a short time, ensure plants are well watered before you leave, and top it up before you leave so that it will keep them going for a few days.

Another thing to consider, especially now that our Council Waste collection services are changing, is including a compost heap in your garden. It's a fantastic way to create free compost from your garden & kitchen waste - & its free, easy and great for your garden. The simplest way to start is to designate a spot in your garden, on the bare earth to enable the worms to access it, & from here start piling on your garden clippings & mowings, any kitchen peelings and waste fruit & veg, and you can also add in some shredded paper or cardboard too. Once a month give it a good mix, & within a year you will have a wonderful compost to use on your beds. Its important to mix it, & also to include a mix of materials to create the best compost, but it really is that easy - & it could save the additional cost of a brown bin. For a slightly less conspicuous option there are various types of compost bins available, apply the same principles and they work in the same way.

Other things to be doing in the garden now:

Continue to feed beans, tomatoes, courgettes and sweetcorn with tomato feed.

Freeze excess crops of tomatoes, chillies, courgette, soft fruit.

Stake tall plants such as Dahlia & Gladioli.

Start looking at any bulbs for Autumn planting such as Narcissi, Tulips & alliums.

Hoe borders on dry days to remove annual weeds.

*Sue Durrani, Secretary, Allotment Association, Wouldham*

***Wouldham allotment plots are available. [Contact Sue: 682363 ]***

# They're Selling Like Hot Cakes!



**SOLD**  
Subject to Contract  
**Bluebell estates**  
01622 717500  
bluebell-estates.co.uk

**Bluebell estates**  
RESIDENTIAL SALES, LETTING AND MANAGEMENT

***More properties required urgently***

At Bluebell Estates, we **love** working in our local area and feel we can offer all the things you would expect from the larger agents with the benefit of **unrivalled local knowledge** plus a much more **personal service**.

We have got some of the **highest qualified staff** in the area and an incredible **90 years** of combined **experience** to draw from under one roof.

We are **honest, work hard** for our clients and always go the **extra mile** wherever possible to achieve the **best results** for all involved.

Please pop in, call or email us and we will be glad to help in any way we can with your selling or letting needs.

**01622 717500**

[john@bluebell-estates.co.uk](mailto:john@bluebell-estates.co.uk)

27 High Street, Aylesford, ME20 7AX



**BROADLEAF**  
TREE SURGERY

For your free quotation call

**0800 999 53 23**

**07429 903 594**

“

High quality & professional tree care.  
Fully qualified and insured with over  
14 years of experience.

”

- Tree removal
- Crown reductions
- Hedge trimming
- Deadwooding
- Crown thinning
- Stump Grinding

[info@broadleaftreesurgery.co.uk](mailto:info@broadleaftreesurgery.co.uk)



## **Trenport confirms handover of Burham's new open space**

A tree planting formally marked the handover of public open space at Burham, following the creation of Peters Village.

Approximately five acres/two hectares, the site is owned by Peters Village developer Trenport but left unused after Court Road, Burham, was by-passed by New Court Road to give a new and wider southerly access to the new 1,000-home community.

Fencing and access gates have since been installed by Trenport and the land is leased and managed by Burham Parish Council for use by dog walkers and as a general play and leisure area.

The tree – one of four, also donated by Trenport – is a flowering prunus, a trademark species for Burham following the visual success of those planted as an avenue between the village hall and recreation ground.

“It was clear that the existing Court Road would suffer more traffic with the arrival of Peters Village, and particularly from HGVs during construction, but Trenport was able to move the route to create New Court Road,” said Burham Parish Council Chairman and newly re-elected TMBC ward councillor Roger Dalton.

“Of course, this then isolated a strip of land and we asked if we could buy it as an amenity area for the parish. Trenport said it was reluctant for now in case further infrastructure work was required, but agreed a two-year lease and peppercorn rent with a future option to buy, presumably with some kind of covenant attached to ensure it remains for the use of the village.”

Cllr Dalton – also Mayor for the Borough (2017-18) – was aided in his tree planting spadework by fellow newly re-elected TMBC ward councillor Dave Davis, Trenport community liaison manager Shirley Boards, Burham parish councillor David Young and parish clerk Pam Saunders.

Trenport Director Chris Hall said: "Building a new 1,000-home community is bound to impact and change the surrounding area but, in this case, we were able to moderate that effect and deliver a neighbourly spin-off benefit from building Peters Village."



Cllr David Young, Parish Chairman Cllr Roger Dalton, Trenport community liaison manager Shirley Boards, Burham parish clerk Pam Saunders and Borough ward councillor Dave Davis

## **REPORTING 155 BUS PROBLEMS ?**



A number of residents who rely on buses have spoken to local councillors about late and cancelled 155 buses. The buses are a vital link for many people and especially those who do not drive. It is important if there is a poor or non-existent service, that it is reported. So a new system of reporting problems has been set up.

If you have problems please contact **Pam Saunders: 01634 685936 or [pam@burhampc.co.uk](mailto:pam@burhampc.co.uk)** ( Parish Clerk for Burham) or **Nicky Grimes: 01634 864319 or [clerk@wouldhampc.co.uk](mailto:clerk@wouldhampc.co.uk)** (Parish Clerk, Wouldham.)

They will require the date and time of the incident, the direction of the bus and brief details of the problem. This should be done as soon as possible after the incident and the details will then be passed to Kent County Council for follow up action. It's important that they get the evidence your reports provide. Any poor service we suffer from now will take time to sort out and it is dependent on timely reporting of the problems as they occur. Our MP, KCC & TMBC councillors and our two parish councils are still working on this problem and making slow progress.

# **SCHOOL LANE**

## **BOARDING KENNELS & CATTERY**

*Authority licensed & inspected annually---*

*Local family run business*

*Long/ Short/Stays & special rates for extra long stays*

**DOGGIE DAY CRECHE FROM £10 PER DAY**

**SUPPORTED BY LOCAL VETS**

**01634 683149**

*Find us on Facebook*



**BARRY BLACK DOG TRAINING**

**TELEPHONE HELP GIVEN @ REASONABLE RATES.**

**ALSO ONE 2 ONES- HOME VISITS OR**

**AT ONE OF OUR GROUP CLASSES**

*Behaviour issues - puppies – obedience & agility classes*

*Professional Hands on Trainer*

*With over 36Yrs experience. KIND & UNDERSTANDING  
methods used . 01634 669885*

*Find us on Facebook*



**BREEDERS OF QUALITY, GOOD NATURED, HEALTH  
CHECKED, CHOCOLATE LABRADORS, LABRADOODLES  
& BRITISH SHORTHAIK CATS.**

**ALL PUPPIES & KITTENS ARE VET CHECKED &**

**APPROVED. CALL 01634 669885** *Find us on Facebook*



# CLARKES FUNERAL SERVICE

(R.G. KINGSBURY M.M.S. Dip)

WE ARE AN INDEPENDENT FAMILY BUSINESS OFFERING  
A 24 HOUR, PERSONAL, CARING SERVICE.

---

ARRANGEMENTS CAN BE MADE AT OUR OFFICE  
OR IN THE COMFORT OF YOUR OWN HOME

---

- **PRE-PAID FUNERAL PLANS AVAILABLE**
- **PRIVATE CHAPEL OF REST**
- **MEMORIALS SUPPLIED** ● **ALL AREAS COVERED**



**31 High Street, Snodland Tel: 01634 240458**

## LOCAL MOBILE HAIRDRESSER

Looking to take on new clients in the area

20 Years Experience.  
Fully Trained Wella Color  
Technician.  
City & Guilds Level 3.  
Teaching Experience.



Please call Michelle  
07821 833112

## ROOFING REPAIRS

GRP Flat Roofing Specialist  
Chimney Repairs / Pointing  
Roof Windows/Skylights

### PROPERTY MAINTENANCE

Guttering / Fascias / Soffits  
Fencing, Paving, Decking  
Interior & Exterior Painting

Call Nick: 07949 588464  
01634 262582

AP Services  
[www.ap-services-kent.co.uk](http://www.ap-services-kent.co.uk)

## Garden Services

Wouldham based

Garden Maintenance, Lawn  
Mowing, Strimming, Hedge  
Trimming, Pressure-washing  
Patios & Decking & Gutter  
Cleaning.

Call Rob Ward:  
Text or phone:  
07812345951



## QUALIFIED FEMALE PLUMBER

Specialising in  
small  
maintenance &  
repairs



For a professional, friendly and  
reliable service—

CALL RACHEL: 07731 756947  
[www.haslerplumbing.co.uk](http://www.haslerplumbing.co.uk)

## WANT TO ADVERTISE IN THIS MAGAZINE?

*We deliver to every house in  
Burham, Wouldham & Peters  
Village each month.*

**WE HAVE SPACE FOR SOME  
MORE ADVERTISING.  
JUST CONTACT THE EDITOR**

## Boxley Timber & Fencing Supplies



Quality Sheds & Summerhouses.  
Sleepers & Decking.

Gates & Trellis made to size.

All types of Fencing. Collection/Delivery

Stockist of tools: DeWalt, Bahco, Ryobi &  
Quality Faithfull Tools

A FAMILY RUN BUSINESS OFFERING  
FRIENDLY PROFESSIONAL ADVICE.

BOXLEY SAWMILL,  
PILGRIMS WAY,  
BOXLEY, MAIDSTONE,  
ME14 3EB. Tel: 01622 753953

[www.boxleytimber.co.uk](http://www.boxleytimber.co.uk)



## ADVERTISING IN THIS MAGAZINE

THIS MAGAZINE IS A FREE, PUBLICATION.

It is produced and delivered by volunteers monthly to each home (*currently 1450*) in Burham, Wouldham and Peters Villages. (*except January & August*)

It can also be viewed on-line:

**[www.wouldhamchurch.org.uk](http://www.wouldhamchurch.org.uk)** **[http://](http://www.burhampc.kentparishes.gov.uk/)**  
**[www.burhampc.kentparishes.gov.uk/](http://www.burhampc.kentparishes.gov.uk/)** &  
**<http://www.wouldhampc.kentparishes.gov.uk/>**

***Please contact the editor if you can do a bit to help delivering the Magazine to a small area near you. Thank you.***

The deadline for copy is always on the 10<sup>th</sup> day of the previous month but please contact the Editor earlier to agree the content and reserve the space. (*see outside back cover*)

### 2019 ADVERTISING SIZES & PRICES.

<b>Size 1.</b> - 6cm x 6cm. 1/6 <sup>th</sup> of A5 page.	1 issue £15	5 issues £65	10 issues £120
<b>Size 2.</b> – 12cm width x 6cm height. 1/3 <sup>rd</sup> of A5 page	1 issue £20	5 issues £90	10 issues £165
<b>Size 3</b> – 12cm width x 12cm height 2/3 <sup>rd</sup> of A5 page.	1 issue £35	5 issues £160	10 issues £288
<b>Full page.</b> A5 12cm width x 19cm height	1 issue £40	5 issues £180	10 issues £330



**REMEMBERING TO  
KEEP UP OUR USE  
OF THE  
155 EVENING BUS!**

**The Community Magazine for Burham, Wouldham, Peters Village**

The deadline for copy is always on the 10<sup>th</sup> day of the previous month but please contact the Editor earlier to agree the content and reserve the space.

Editor: Mary Davis, Tel. 01634 869650.  
e-mail: [zero.mexdavis247@btinternet.com](mailto:zero.mexdavis247@btinternet.com)

*Please note;*

*there are combined July/August & December/January editions.*

**A Note From The Editor**

We hope you enjoy reading this Magazine.

We welcome your news items and articles.

However, we reserve the right to edit or not to publish.

The publication of any advertisement does not carry the Church's endorsement.